

### Tree Print Format

<b>Set ID</b>	UOFMO	<b>Last Audit</b>	Valid Tree
<b>Effective Date</b>	06/01/2024	<b>Status</b>	Active
<b>Tree Name</b>	DEPT_SECURITY		Departmental Security

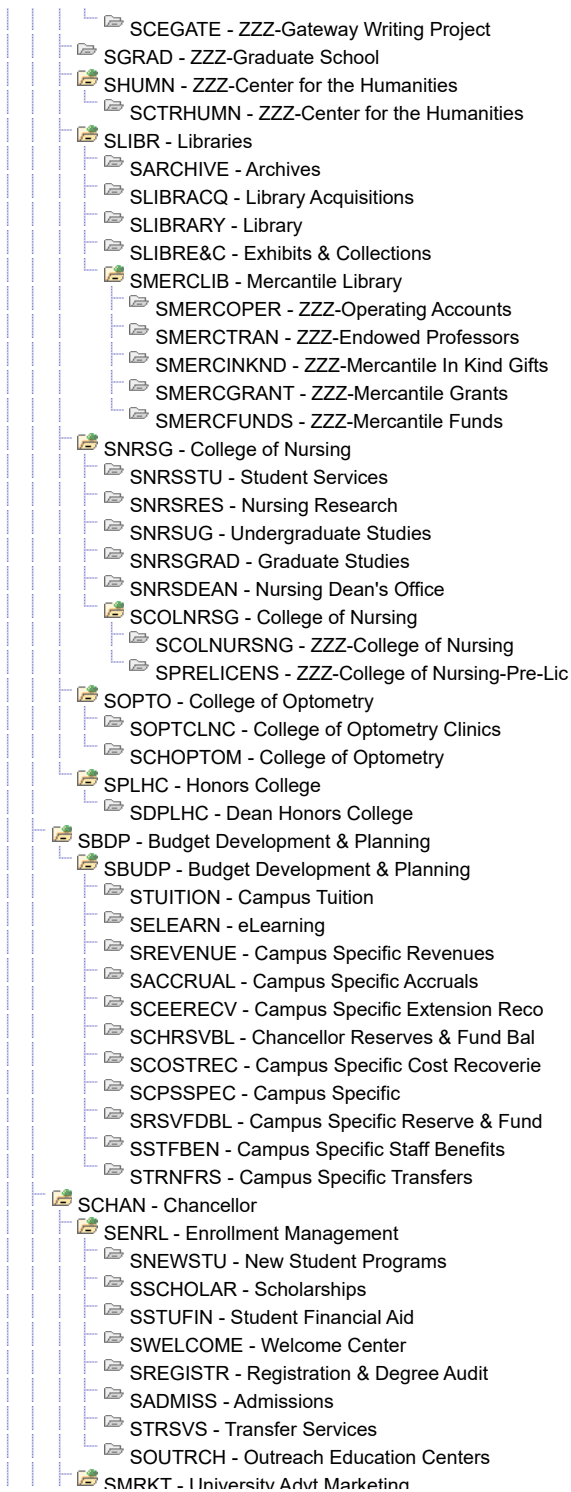
- STLOU - St. Louis
  - SRSEC - VC Research & Econ Development
    - SRES - VC Research
      - SCORPFND - Corp. Foundation Relations
      - SECDV - Economic and Community
      - SPUPORES - Community Innov & Action Ctr
      - SMPPADM - ZZZ-Public Policy Admin
      - SMOIMH - MO Institute of Mental Health
        - SMIMHRESEV - ZZZ-MIMH-Research & Evaluation
        - SMIMHPOPED - ZZZ-MIMH-Prev Outreach Prof Ed
        - SMIMHCBHI - ZZZ-MIMH-Consult Behav Hlth In
        - SMIMHPLYET - ZZZ-MIMH-Policy & Ethics
        - SMIMHLIBRY - ZZZ-MIMH-Library
        - SMIMHCLDFA - ZZZ-MIMH-Child & Family
        - SMIMHMTLHL - ZZZ-MIMH-Mental Health Systems
        - SMIMHCNTED - ZZZ-MIMH-Continuing Education
        - SMIMHADMIN - ZZZ-MIMH-Administration
      - SCTRNS - ZZZ-Center for Nanoscience
      - SNEURODY - ZZZ-Center for Neurodynamics
      - SCTRME - ZZZ-Ct forMolecularElectronics
      - SRSCHADM - Research & Econ Comm Dev
      - SMAMTC - ZZZ-Missouri Enterprise
      - SLDRS - ZZZ-Leadership Institute
      - SRSCH - ZZZ-VC Research
    - SENCA - VC Enroll Strat & Career Advmt
      - SATHL - Athletics
        - SATHLTCS - Athletics
      - SCRAD - Career Advancement
        - SWRKFRCE - Workforce Integration
      - SCE&TC - Computer Education & Training
    - SVCDV - Vice Chancellor Advancement
      - SUADV - University Advancement
        - SUADEV - University Development
        - SUADVSR - Advancement Services
        - SUAADM - UA-Administration
        - SUAEVENT - External and Donor Relations
      - SALUMACT - Alumni Activities
    - SUNIT - ZZZ-College and Units
      - SUCAM - University Campaign
        - SDEVOFF - Development Office
      - SUCAMPGN - University Campaign
    - SUADM - Univ Advancement Adm
      - SGRNDOPR - Grand Center Operations
    - SALUM - ZZZ-Alumni & Community Relatio

- ↳ SANNGIV - Annual Fund
- ↳ SKWMU - KWMU Radio
  - ↳ SKWMURAD - KWMU FM Radio
- ↳ SDVPD - Development Pending
  - ↳ SDEVPEND - Development Pending
- ↳ SUDEV - University Advancement Archive
  - ↳ SCOL&UNT - College & Units
  - ↳ SDVALRCD - ZZZ-Dev/Alumni Records
  - ↳ SDONOREL - ZZZ-Donor Relations
  - ↳ SCORPFDN - ZZZ-Corps/Fdn/PG
  - ↳ SCONSTIT - ZZZ-Constituent Relations
  - ↳ SANUALFD - ZZZ-Annual Fund
  - ↳ SUNIVREL - University Relations
- ↳ SACAF - VC for Academic Affairs
  - ↳ SADVC - UMSL Advanced Credit
    - ↳ SA&SADVCR - Advanced Credit
- ↳ SPAC - Touhill Performing Arts Ctr
  - ↳ SPERARTS - Performing Arts Operations
- ↳ SRTNS - Access and Academic Support
  - ↳ SSTUSUPP - ZZZ-Student Support Services
    - ↳ SMULTICULT - ZZZ-Multicultural Student Serv
    - ↳ STUTORCTR - ZZZ-University Tutoring Center
    - ↳ SPRECOLLEG - ZZZ-Pre-Collegiate Program
    - ↳ SSTUENRACH - ZZZ-Student Enrichment/Achieve
  - ↳ SENRICH - Student Enrichment
  - ↳ SUMSLNOW - UMSL Nights Online Weekends
  - ↳ STUTOR - University Tutoring Center
  - ↳ SACCESS - Access and Academic Support
  - ↳ SSTURTNS - Student Retention Services
  - ↳ SPRECOLL - Precollegiate Program
  - ↳ SMULTICU - Multicultural Student Services
- ↳ SSSW - School of Social Work
  - ↳ SCWCOMM - Creating Whole Communities
  - ↳ SSOCWORK - Social Work
- ↳ SONLN - Tching,Lrning,OnEd
  - ↳ SCTRT&L - Center for Teaching & Learning
  - ↳ SONLINE - ZZZ-Online Education
- ↳ SCEFC - ZZZ-Ctr Excel Financial Couns
- ↳ SPPRC - ZZZ-Office of Public Policy
  - ↳ SDEANPPA - ZZZ-Dean-School Public Policy
- ↳ SFA&C - ZZZ-College of Fine Arts & Com
  - ↳ SMEDIA - Media Studies
  - ↳ SGALLERY - ZZZ-Gallery 210
  - ↳ SDEAFA&C - Dean-College Fine Arts & Comm
  - ↳ STHTRDNC - ZZZ-Theater & Dance
- ↳ SSTAF - Vice Provost Student Affairs
  - ↳ SSTUOPER - Student Life Operations
  - ↳ SSTULIFE - Student Life
  - ↳ SRECCTR - Campus Life Recreation Center
  - ↳ SHCDAS - Health, Counseling, DAS
  - ↳ CSUCCEED - ZZZ-SUCCEED Program
  - ↳ SADMSVCS - Student Services & Campus Life
  - ↳ SNWSTUPR - ZZZ-New Student Programs

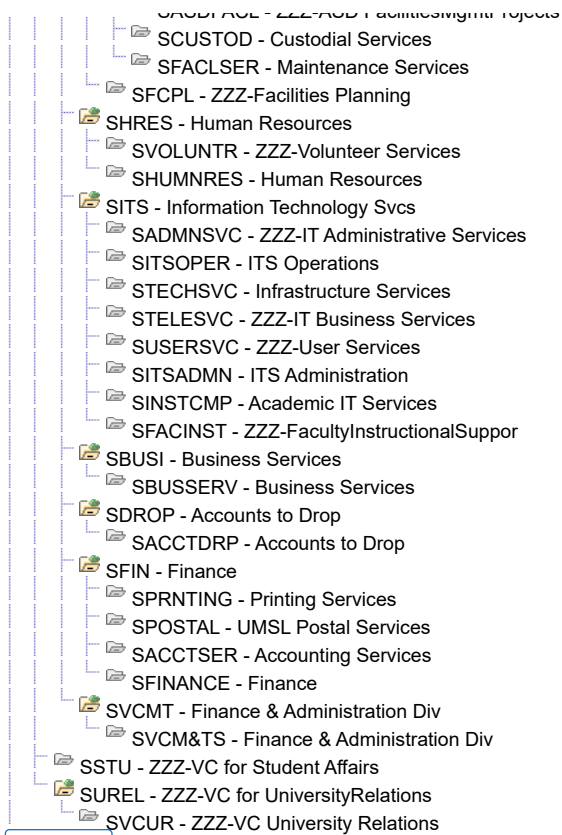
- SSTUACT - ZZZ-Campus Life
    - SCLUCTROPR - ZZZ-Millennium Student Center
    - SCLRESLIFE - ZZZ-Residential Life
    - SCLNWTUPR - ZZZ-New Student Programs
    - SCLHOUSING - ZZZ-Campus Housing
    - SCLCONFER - ZZZ-Campus Life Conferences &
    - SCLADMNAUX - ZZZ-Admin Services Div Aux Svc
    - SCLOPERATE - ZZZ-Campus Life Operations
    - SCLRECCTR - ZZZ-Campus Life Recreation Cen
    - SABUSINES - ZZZ-Student Affairs Business C
    - SLOPERATE - ZZZ-Student Life Operations
    - SSTUDLIFE - ZZZ-Student Life
    - SCONFEREN - ZZZ-University Conferences
    - SRESLIFES - ZZZ-Residential Life
    - SRECSPTS - ZZZ-ecreationSports/Intramural
    - SHOUSINGS - ZZZ-Campus Housing
  - SHOUSING - Campus Housing
  - SRESLIFE - ZZZ-Residential Life
  - SCONFER - ZZZ-University Confer & Inn
  - SUCTROPR - ZZZ-University CenterOperating
  - SADMNAUX - ZZZ-Admin Services Div AuxSvcs
  - STRNSRV - ZZZ-Transfer Services
  - SRECSPT - Recreational Sports/Intramural
  - SCTRSTDS - ZZZ-Center for Student Success
  - SDEGAUDT - ZZZ-Degree Audit Reporting
  - SADVTRN - Student Affairs Services
  - SCARSERV - Career Services
  - SCOUNSEL - ZZZ-Counseling Services
  - SDISABIL - ZZZ-Disability Access Services
  - SHLTHSRV - ZZZ-University Health Services
  - SSTRINST - Strengthening Institutions
  - SVCSTUAF - Vice Provost Student Affairs
  - SWOMENCE - Student Affairs Programs
- SCAC - ZZZ-Child Advocacy Center
- SENGR - UMSL/Washington Univ. Engineer
  - SENGPROG - UMSL/Washington Univ. Engineer
- SA&S - College of Arts & Sciences
  - SMATHEMA - Mathematics and Statistics
  - SCOMPSCI - Computer Science
  - SBEVHLTH - Center for Behavioral Health
  - STHEATRE - Theatre
  - SMUSIC - Music
  - SCOMMUNI - Communication
  - SARTHIST - Dept of Art & Design
  - SASCNTED - ZZZ-A&S Continuing Education
    - SA&SCDEAN - ZZZ-A&S Associate Dean
    - SA&SECONED - ZZZ-Economic Education
    - SA&SGWPRO - ZZZ-Gateway Writing Project
    - SA&SINNOV - ZZZ-Innovation
    - SA&SJRSCI - ZZZ-Junior Science
    - SA&SLABOR - ZZZ-Labor Studies
    - SA&SMATHPR - ZZZ-Math Programs
    - SA&SMICROS - ZZZ-Microcomputing

- SA&SSPECPR - ZZZ-Special Programs
- SCEFARTS - ZZZ-Fine Arts
- SAIRSCIE - ZZZ-Air Science
- SMILSCIE - Military & Veteran Studies
- SGERONTO - Gerontology
- SPSYCTR - Center for Trauma Recovery
- SA&SACAD - Academic Advising, Arts & Scie
- SCACEN - Child Advocacy Center
- SANTHROP - Anthropology
- SBIOLOGY - Biology
- SCHEMIST - Chemistry
- SCRIM&CJ - Criminology & Criminal Justice
- SDEANA&S - Dean of Arts & Sciences
- SECONOMI - Economics
- SENGLISH - English
- SFORLANG - Language & Cultural Studies
- SHISTORY - History
- SICTRPEC - Harris World Ecology Center
- SIWGSTU - Program in Gender Studies
- SMATH&CS - ZZZ-Mathematics & Computer Sci
- SPHILOSO - Philosophy
- SPHYASTR - Physics and Astronomy
- SPOLISCI - Political Science
- SPSYCHOL - Dept of Psychological Science
- SPSYSERV - Psychological Services
- SSOCIOLO - Sociology
- SACDE - ZZZ-Center for Academic Develo
- SACF - VC Academic Affairs
- SGSPL - UMSL GEOSPATIAL
- SINSTRES - Institutional Research
- SGRADSCH - Graduate School
- SACADDEV - Center for Academic Developmen
- SDEANEVE - Dean Evening College
- SCETHICS - Center for Ethics Public Life
- SCONTEDU - VC- Acad Affairs CE & Outreach
- SCHOCD - Connect Human Origin & Cul Div
- SCOLABTV - Des Lee Collaborative
- SBRTPRK - ZZZ-Business Research&TechPark
- SVCACAFF - VC Academic Affairs
- SBUSN - College of Business Administra
- SCTREFC - Ctr for Excel Financial Couns
- SLDRSHIN - Executive Leadership Institute
- SBUSCE - Continuing Business Education
- SBUSSUM - Summer Session Instruction
- SBUSSUMMER - ZZZ-Summer
- SBUSRES - Research
- SBUSMKT - Marketing
- SBUSMKTING - ZZZ-Marketing Area
- SBUSMIS - Mgmt Info Systems Area
- SBUSMISYS - ZZZ-Mgmt. Info Systems Area
- SBUSMAN - Management
- SBUSMANAG - ZZZ-Management Area
- SBUSLOM - Supply Chain Mgmt & Analytics

- SBUSLOMAN - ZZZ-Supply Chain Mgmt & Analyt
- SBUSINS - Instruction Other
- SBUSIBI - International Bus Inst
- SBUSIBINST - ZZZ-International Business Ins
- SBUSGEN - CoBA General
- SBUSGENER - ZZZ-CoBA General
- SBUSFIN - Finance
- SBUSFINAN - ZZZ-Finance Area
- SBUSACC - Accounting
- SBUSACCTG - ZZZ-Accounting Area
- SCTRBIS - Center for Bus & Ind Studies
- SBUSGRAD - Graduate Related Activities
- SBUSFUND - Gift and Scholarships
- SBUSGIFTAC - ZZZ-Gift Accounts
- SBUSSCHOL - ZZZ-Scholarship Accounts
- SBUSACAD - Business Academic Advisors & C
- SBUSADM - ZZZ-College of Business Admini
- SDEANBUS - Dean College of Business
- SCTRTRAN - Center for Transp Studies
- SCIS - Center for International Studi
- STDYABRD - Study Abroad Program
- SCINTSTU - Office of Int Stud & Programs
- SEDUC - College of Education
- SSUCCEED - SUCCEED Program
- SSHEARIN - Sue Shear Academy
- SEDOEEA - Educ Effectiveness & Accred
- SEDINTER - Educ Interdisciplinary Prgs
- SEDLEARN - Professional Learning & Innova
- SEDPREP - Educ Preparation & Leadership
- SGATEWR - Gateway Writing Program
- SSED&K12 - ZZZ-Secondary & K-12 Education
- SEDECET - ZZZ-Early Chlhd,Elem, TESOL&S
- SRISEDUC - ZZZ-Regional Institute Science
- SPHYSEDU - ZZZ-Physical Education
- SEDUCSTD - ZZZ-Educational Studies
- SE&ECEDU - ZZZ-Elem & Early Childhood Edu
- SBEHVSTD - ZZZ-Behavioral Studies
- SBRIDGPR - ZZZ-Bridge Program
- SCHARCTZ - Ctr Character & Citizenship
- SDEANCOE - Educ Academic Support & Admin
- STECHCTR - Technology & Learning Ctr
- SIMSELT - ZZZ-Inst Math Science Edu&Lrn
- SCLINEXP - Clinical Experiences
- SDEANEDU - Dean College of Education
- SEDACADV - COE Advising and Prof Exp
- SEDCOUNS - ZZZ-Counseling - College of Ed
- SEDLDRPO - ZZZ-Educational Leadership & P
- SEDPSYCH - Educ Sciences & Prof Pgms
- SEDR&EXF - Educ Research & External Funds
- STCH&LRN - ZZZ-Teaching & Learning
- SUCDCTR - University Child Developmentl
- SEVEC - ZZZ-Evening College
- SEXTN - ZZZ-Extension Division



- SUAMARKT - University Advt Marketing
  - SUNVCOMM - University Communications
  - SGRAPHIC - Graphic Services
- SCHNL - Chancellor
  - SPUBAFFR - Public Affairs
    - SSHEARINST - ZZZ-SueShear InstituteforWomen
    - SPUBAFFAIR - ZZZ-SpecialUnits-PublicAffairs
  - SCAMPCHN - Campus Departments Chancellor
- SCHSU - Chancellor-Special Units
  - SCHANCEL - Special Units Chancellor
  - SCHANSPE - ZZZ-SpecialUnitsChildAdvocacyS
  - SOEQOPP - Special Units Office of Equal
- SMTS - VC Finance & Administration
  - SCASH - Cashier's Office
    - SCASHIER - Cashiers Office
  - SSFTY - Institutional Safety
    - SASDSFTY - ASD Institutional Safety Proje
    - SPARKING - Transportation & Parking
    - SPOLICE - UMSL Police
  - SCFM - Facilities Management
    - SFACPLAN - ZZZ-Facilities Planning
    - SGROUNDS - Grounds
      - SFACP&D - Facilities Planning & Design
      - SFACCONS - Facilities Construction
      - SSECSVCS - ZZZ-Security Services
      - SENVHLSF - Environmental Health & Safety
    - SPLNCONS - ZZZ-Planning & Construction
      - SPROJECTS - ZZZ-Planning & Construction Pr
    - SCAPPROJ - Facilities Management
    - SFACSERV - Maintenance Operations
      - SCUSTODIAL - ZZZ-Custodial Services
      - SCUSTOMER - ZZZ-Customer Services
      - SFACLPROJ - ZZZ-FacilitiesServicesProjects
      - SFACSTORE - ZZZ-Facilities Storeroom
      - SMAINTSER - ZZZ-Maintenance Services
      - SGROUNDSS - Grounds
    - SPROPA&D - ZZZ-Property Acq & Dev
    - SUTILITY - Campus Utilities
    - SASDFIN - ZZZ-ASD Finance Support
    - SADMNSER - ZZZ-AdministrativeServicesOfic
  - SASD - Vice Chancellor Administrative
    - SAFCS - ZZZ-ASD Finance Support
      - SASDF&C - ZZZ-ASD Finance Support
    - SPMG - ZZZ-Properties Management Grp
      - SUMSLPRP - UMSL Properties
    - SCMPH - ZZZ-Campus Housing
    - SRECS - ZZZ-ReationalSports/Intramural
    - SADAU - ZZZ-Admin Services Div AuxSvcs
    - SASDV - ZZZ-VC Administrative Services
      - SVCADMSE - ZZZ-VC Administrative Services
    - SFACL - Facilities Services
      - SGENSERV - ZZZ-General Services
      - SASDFAC - ZZZ-ASD FacilitiesMgmtProjects



[Return](#)